



Optima CR Scanner

Powered by PACS Pro Veterinary Software

A compact, cost-effective CR reader with superior image quality and product durability.

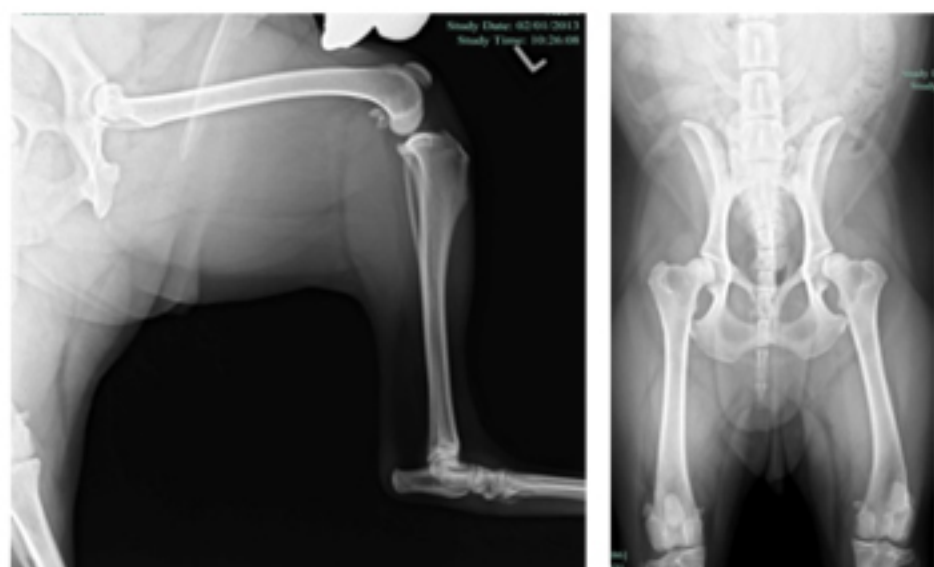
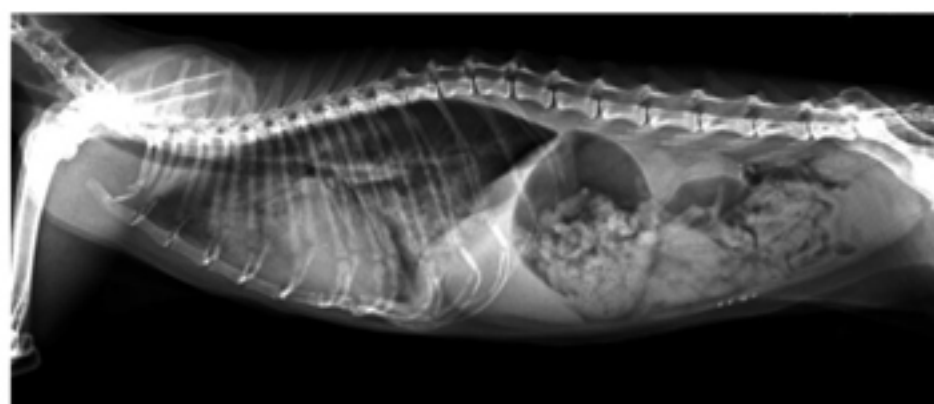
Compact Footprint

The Optima is one of the most compact and lightweight CR scanner systems available. The required space is comparatively smaller than most table-top systems and can be installed in any open space.



Flexible Use for Various Specialties

The IP cassette can be used for various studies ranging from equine to small animals and exotics. Virtually all Imaging requirements can be satisfied with the Optima CR system.



Durability

The Optima systems have proven to be reliable day-in and day-out, thanks to the well-designed product features and the built-in redundancy that prevents problems before they occur. In working with the Optima, its proven durability will provide you with the maximum uptime for your medical facilities.

Superior Images

Acculmaging™ from RadInfo Systems is an integrated digital image processing technology that enhances the contrast and sharpness of the entire image without any risk of losing the image details. With Acculmaging™ technology, you can now obtain stable, optimized and high-quality images.

Optima CR Scanner Models

Optima SL • Up to 17 plates/hour (14x17)

Optima CR • Up to 34 plates/hour (14x17)

Specifications

Standard Components	Optima CR Scanner, Power Cord
PC Workstation	Dell Opti-series Small Form Factor or Dell E55-series Notebook
Included Storage Capability	32,000 +/- 14MB DICOM Images
Supplies	<p>Imaging Plate ST-VI:</p> <ul style="list-style-type: none"> ◆ 35 × 43 cm (14" × 17"), ◆ 35 × 35 cm (14" × 14") ◆ 10" × 12", 8" × 10" ◆ 15 × 30 cm (Variation) <p>IP Cassette Type CC:</p> <ul style="list-style-type: none"> ◆ 35 × 43 cm (14" × 17") ◆ 35 × 35 cm (14" × 14") ◆ 10" × 12", 8" × 10" ◆ 15 × 30 cm (Variation)
Time Required for IP Feed/Load	Minimum 66 sec.
Processing Capacity	Up to 55 IPs/hr.
Reading Specification	10 pixels / mm
Time to Start on Display	Minimum 33 sec.
Network	10 Base T / 100 Base TX
Dimensions (W × D × H)	24" × 16" × 31"
Weight	70 kg (155 lbs.)
Power Supply Conditions	Single phase 50 - 60 Hz AC 100 - 240 V ±10% 5 A (max.)

Highlights

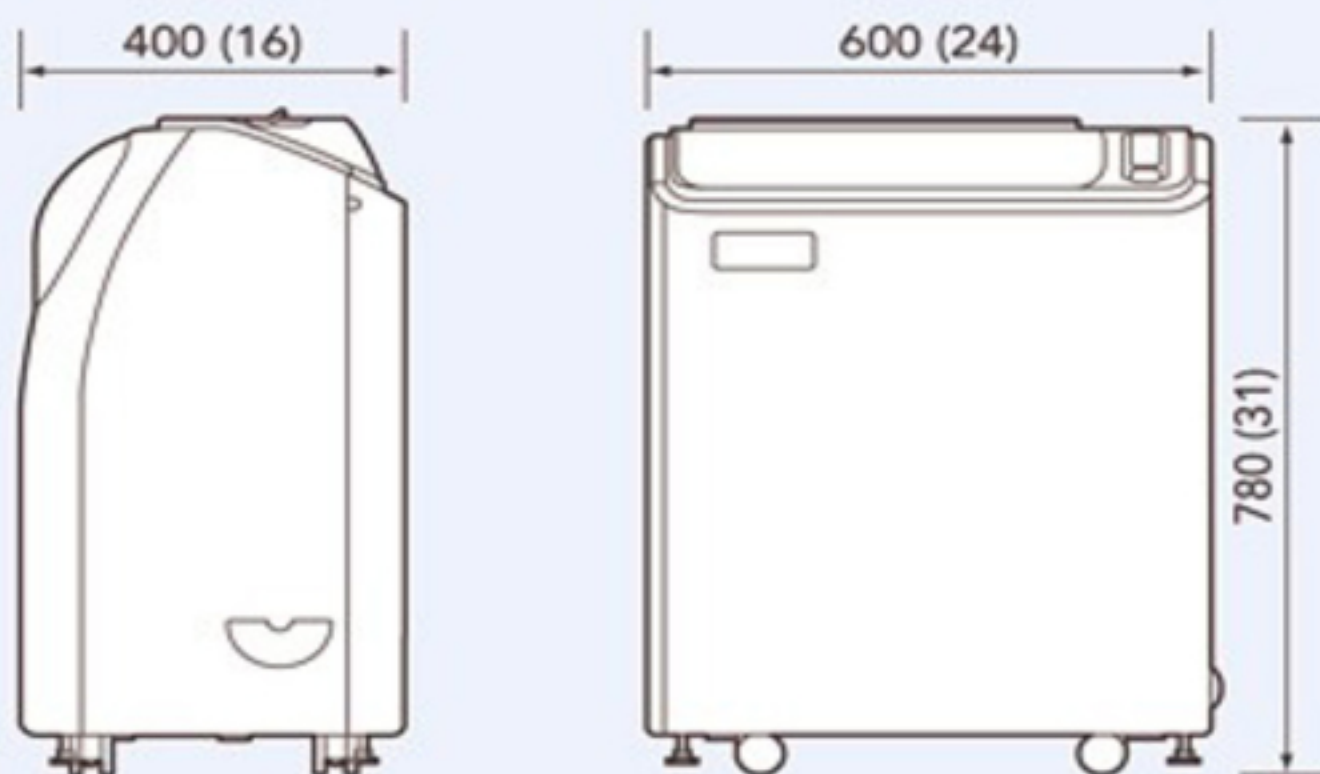
The Optima CR is powered by PACS Pro™ Veterinary Acquisition & Viewing Software with Acculmaging™. PACS Pro Acquire is a feature-rich application installed on the Optima CR workstation to provide the following:

- ◆ Integrated DICOM Viewer with Tools
- ◆ DICOM Viewer supports up to 5MP Monitor
- ◆ Customizable/Sortable Patient Worklist
- ◆ Single & Multi-patient CD/DVD Burning
- ◆ DICOM Store/Send to Multiple Destinations
- ◆ Ability to Create Eight Unique DICOM Tags
- ◆ Export/Email Images as JPEG, TIFF, BMP, DICOM
- ◆ Create/Attach Study Notes and Reports
- ◆ Windows Print (DICOM Print Optional)



Dimensions

Unit: mm (in.)



Imaging Plate ST-VI

35 × 43 cm (14" × 17"),
35 × 35 cm (14" × 14"),
10" × 12", 8" × 10",
24 × 30 cm, 18 × 24 cm,
15 × 30 cm (Variation)



IP Cassette Type CC

35 × 43 cm (14" × 17"),
35 × 35 cm (14" × 14"),
10" × 12", 8" × 10",
24 × 30 cm, 18 × 24 cm,
15 × 30 cm (Variation)

